

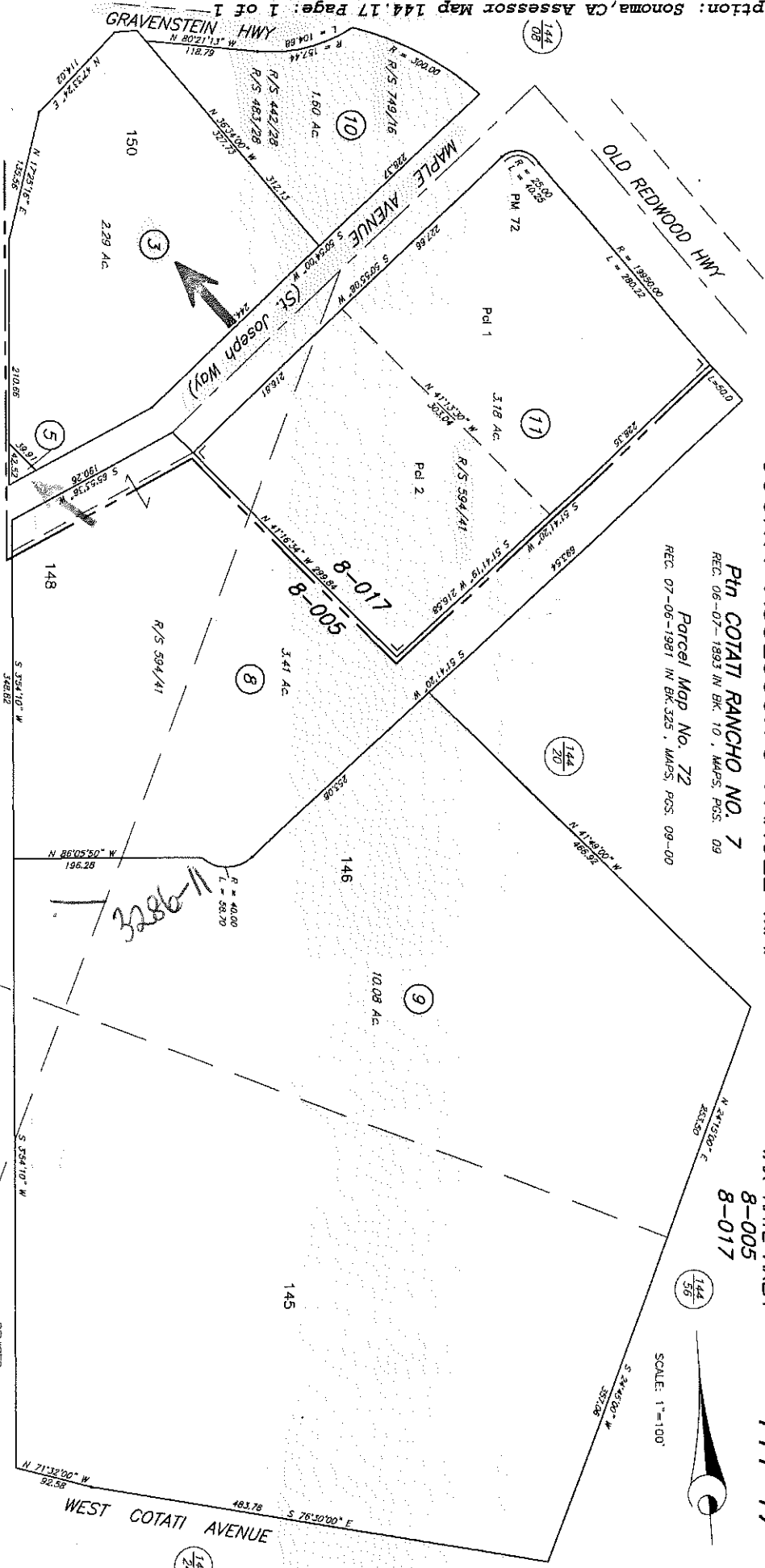
COUNTY ASSESSOR'S PARCEL MAP

Pth COTATI RANCHO NO. 7
 REC. 06-07-1893 IN BK. 10, MAPS, PGS. 09
Parcel Map No. 72
 REC. 07-06-1981 IN BK. 525, MAPS, PGS. 09-00

TAX RATE AREA
 8-005
 8-017

144-17

SCALE: 1"=100'



NOTE: This map was prepared for assessment purposes only. It does not indicate approval, equality or a valid building site. No liability is assumed for the accuracy of the data delineated. The bearings are based on the information recorded on the subject parcel. The map may not represent details, prior assessment maps, etc.)

NOTE: Assessor's parcels do not necessarily constitute legal lots. To verify legal parcel status, check with the appropriate city or county community development or planning division.

REVISED

- 01-18-82=7
- 03-11-89=09-LSL
- 03-12-08=10-KB
- 02-04-10=Cor-KB
- 02-04-10=11-KB
- 12-26-12=R/S-KB

Assessor's Map Bk. 144, Pg. 17
Sonoma County, Calif. (Aca0)

KEY 3-12-09 KB